

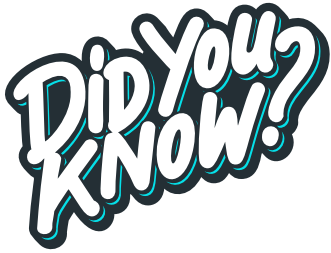


EST - 1945
UMEI
CHRISTIAN HIGH SCHOOL

HOMESCHOOL TO HIGH SCHOOL

The transition from homeschool to high school may have you feeling nervous, excited, or confused. At UMEI, we work together with each student and their family to ensure a successful transition into our welcoming high school environment!

WE KNOW HOMESCHOOLERS!



Approximately 15-20% of the UMEI student body comes from a homeschool background!



A Message from the Principal

Mrs. Sonya Bedal

principal@umei.ca

In my 12 years as principal, I have had the privilege of working with dozens of homeschool families who choose UMEI Christian High School. Homeschool families trust UMEI to carry on the education of their children due to our small class sizes, welcoming community environment, and emphasis on whole person Christian education. They get the benefit of sports, clubs, and social events while still learning in a nurturing community environment.

As principal, I am able to process homeschool transcripts so that all of our students are working toward their Ontario Secondary School Diploma. We ensure each student, regardless of background, is prepared for university, college or the workplace. Whatever their goals are, we help them to have the best preparation to reach those goals.

More than anything else, at UMEI, our teachers and school community ensure that every student is welcome and belongs at UMEI!

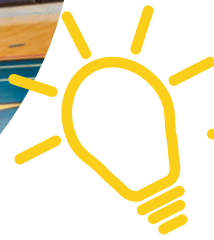
"UMEI welcomed me with open arms! Being a homeschool student, I was nervous about coming to UMEI but everyone was so nice and friendly towards me. I'm enjoying so many fun group activities and different programs that I have access to here at UMEI. I love the small class sizes because I got to know everyone so quickly and the opportunity to explore my faith here in a safe space with like-minded friends is so amazing!"

- Grade 12 student, homeschooled until Grade 11



"The atmosphere was the biggest change for me. It can be a little tiring at first, but it is easy to adapt here! People are friendly and very kind. If you're not a people person, there are still lots of people like that at UMEI for you to hang out with. If you get overwhelmed or anxious in big crowds, there are always ways that you can take a break. Within a week or two, you will feel at home!"

- Grade 9 student, formerly homeschooled



TOP TIPS

- Get to know your classmates - participate in class discussions & group activities. Everyone is so nice!
- Use Success Period - get one-on-one help from teachers to help understand expectations
- Be prepared for more distractions - if you need a quiet place to focus, just ask!
- Get involved! Joining clubs and sports is a great way to get the most out of high school
- BE YOURSELF! You don't need to worry about fitting in - just be you! We all belong at UMEI.



ADVICE FROM OUR STUDENTS

PART-TIME STUDENT POLICY

In the case where parents desire to homeschool their children in some courses, but attend UMEI for other courses, students may apply as a part-time student. Due to scheduling, this option is only available for students enrolling in Grade 9 or Grade 10. Students are welcome to use library space between UMEI courses to complete their own work, attend chapel, join clubs and participate in student life.

Families who wish to explore this option are invited to:

- Arrange a tour with the Director of Enrollment & Community Engagement and get general questions answered
- Schedule a meeting with the Principal to discuss course requirements, course options, and timetabling
- Review the special tuition structure and policies for part-time students



UMEI CHRISTIAN HIGH SCHOOL

614 Mersea Road 6, Leamington ON N8H 3V8

Office: office@umei.ca; 519-326-7448

Admissions: admissions@umei.ca; 226-346-6735



@umei_chs



@umei_chs



@umeischool